

## GB4 Lever L-Handle

### Features

- Stylish and attractive handle with circular, 'easy-fix' escutcheon that are mounted through a standard pierced aperture
- Lock cylinders are "shuttered" for weather resistance, and handle can be water-sealed
- Locking and non-locking models available
- 180° rotation as standard, rotation can be limited to 90°, LH/RH when required

### Material

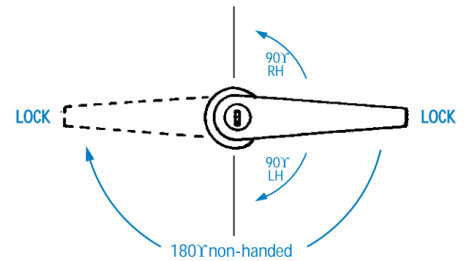
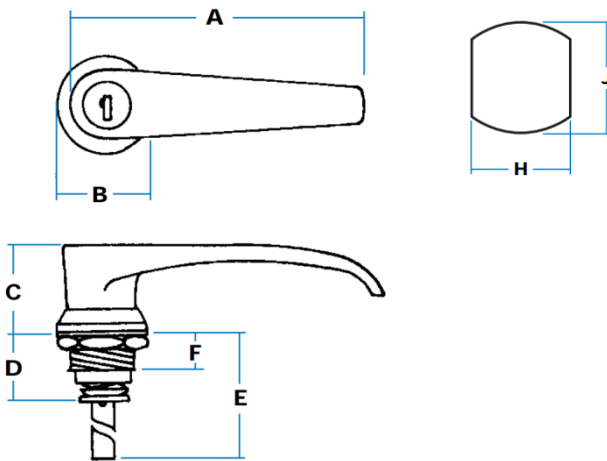
- Steel, chromium plated or black powder coated

### Notes

- Mount through panel piercing against 'flats' on escutcheon, and secure with large brass nut
- Neoprene gasket and stainless spring spacing washer are provided
- 'FS' keys as standard with 'shuttered' keyway. Optionally 'FT' or 'DLP' key types also available
- **Contact Gripwell sales for cam pawl and centre-case options**



**GB4-G00960**  
(Large L-handle with  
easy-fix mounting)



Handles operate through 180° as standard (non-handed), locking in two positions. To special order, rotation can be limited to 90° LH (clockwise) or 90° RH (anticlockwise), when handle will only lock in the rest position. Illustration shows handle with 'flats' vertical on escutcheon.

Part No.	Finish	Key	A	B	C	D	E	F	H	J
GB4-G00960	Chrome	Standard	115	30	30	26	63	15	22	24
GB4-G00960-01		FS880								
GB4-G00961		Non-Locking								
GB4-G00960B	Black	Standard								
GB4-G00960B-01		FS880								
GB4-G00961B		Non-Locking								



### Handle For Recess Fitting

Versions of this handle are available with 'Equilateral' recess plate, reducing external projection to 15 mm. These are 'handed', and the illustration shows handle fitted on right-side of the pan.

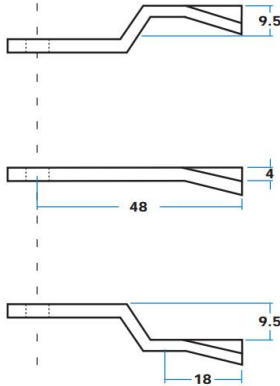
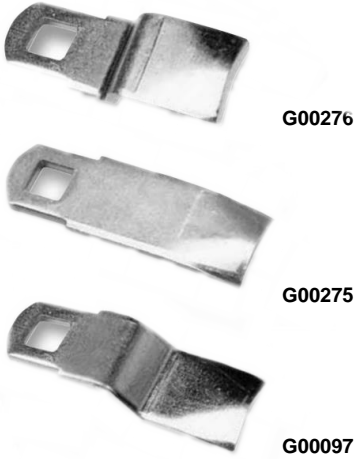
"Equilateral" recess  
pan with handle on  
RH side G00156

## Cam Form and Multi-Point Cam Pawls

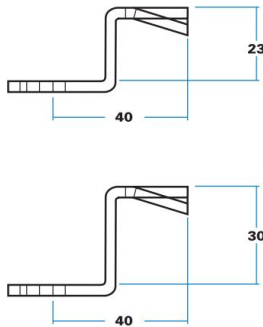
### Features

- These pawls are in 3 mm thick mild steel, zinc plated with 8 mm square hole
- Cam-form types have a 4 mm 'leading edge' for good engagement. They can be used with most of our compartment locks, 'Compact' and 'Turn-button' models, and also with handles having 8 mm square shaft, as illustrated below.

### Cam-Form Cam Pawls



### Cam-Form Cam Pawls



### Cam Pawl Fitted To Locking Handles

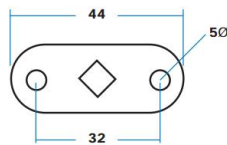


The 8 mm shaft is threaded M10 so that square form is retained. Cam Pawl can be adjusted using nut (GMP00221) and locknut (GMP00220) illustrated

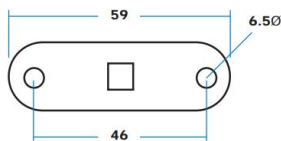
### Two-Point Cam Pawls



**G00508** (illustrated)  
**G01911** (with in-line square)



**G00789** (illustrated)  
**G01389** (with square at 45° to centre line)



## Die Cast Cams & Heavy Duty Cam Pawls

### Features

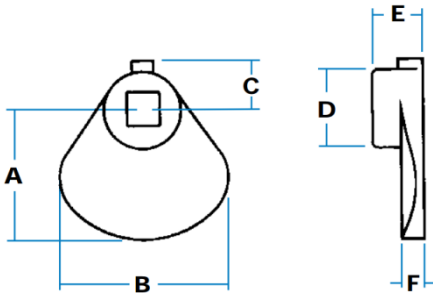
- Our die cast cams provide the simplest way of securing an enclosure door. They fit onto a plain, 8 mm-square shaft, and are clamped into position with the integral socket screw. A version is available with hole threaded M8, to suit corresponding round shaft.
- The range of heavy steel cams (below) is normally fitted to our 'drop-T' series, but they can be used with any 8 mm square shaft, normally threaded M10 with securing nuts to allow for adjustment and retention. Finish is bright zinc-plated.
- All cams are fitted with hexagon-head grub screw, adjusted by 3/32" Allen key (threaded 10/32 UNF x 3/8")



**G27296**  
(Small cam)



**G00837**  
(Large cam)



Part No.	Description	A	A1	B	C	D	E	F
<b>G27296</b>	Small cam, 8 mm square hole							
<b>G27297</b>	Small cam, M8 threaded hole	32	63	40	11	19	13	4
<b>G00837</b>	Large cam, 8 mm square hole							

Heavy-duty cam pawls, made in rolled-edge mild steel, 30 mm width x 5 mm deep, with 3 mm 'V' raise for cam-action

